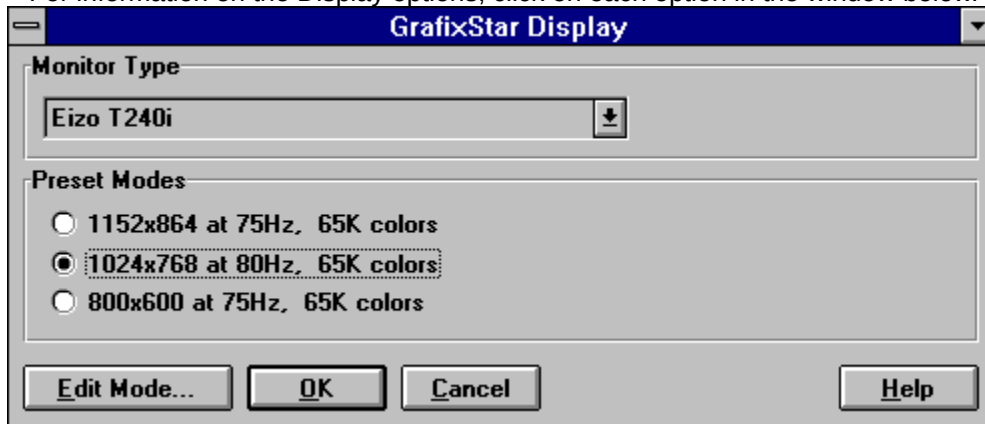


## GrafixStar Display

You use the GrafixStar Display application to set the [display mode](#) for your monitor.

For information on the Display options, click on each option in the window below.



## Monitor Type

Select the name of your monitor from the Monitor Type list box.

If the name of your monitor does not appear in the list box:

1. Refer to the documentation provided with your monitor to find out its horizontal (**not** vertical) scan frequency range.
2. From the list box, select the highest 'other' option that falls within your monitor's scan frequency range. For example, if your monitor has a scan frequency range of 30 kHz - 64 kHz, you should select 'Other 64 kHz horizontal scan rate' from the list box.
3. If you do not know the scan frequency range for your monitor, select the 'Other SuperVGA' option which corresponds to the size of your screen, measured diagonally from corner to corner.
4. If your monitor's screen size is not included in the 'SuperVGA' options, select 'Fail-safe'. However, if you select this option, you will be restricted to a single display size (640 x 480).

## **Preset Modes**

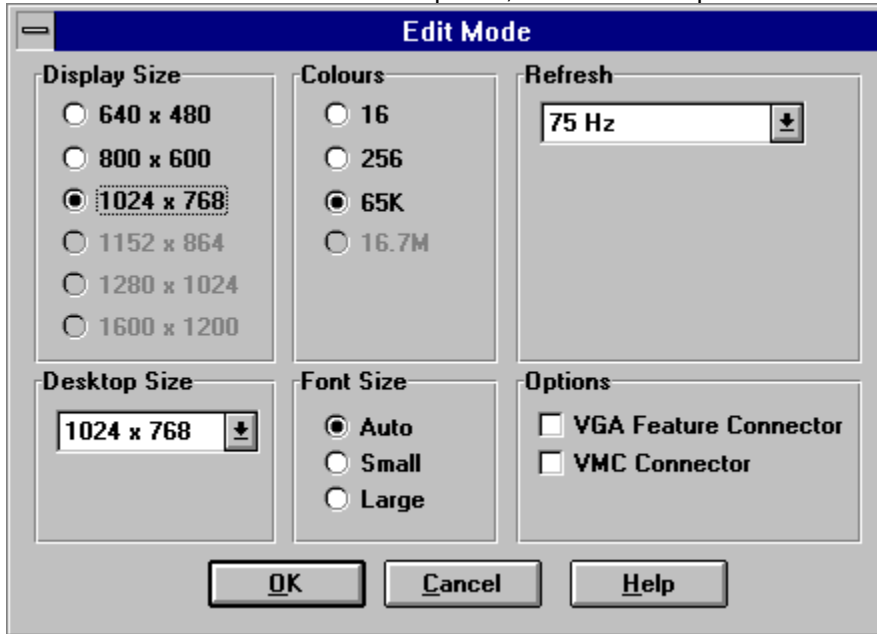
Once you have selected a Monitor Type from the list box, GrafixStar displays three Preset Modes. You use these buttons to select a display mode.

To change a preset mode, select the mode that you want to change and then choose the Edit Mode button.

## Edit Mode

The Edit Mode dialog allows you to change the characteristics of the currently selected Preset Mode. Edit Mode only allows you to select options that are suitable for your combination of GrafixStar and monitor. Options displayed with gray text are not available.

For information on the Edit Mode options, click on each option in the dialog shown below.



The screenshot shows the 'Edit Mode' dialog box with the following settings:

- Display Size:** Radio buttons for 640 x 480, 800 x 600, 1024 x 768 (selected), 1152 x 864, 1280 x 1024, and 1600 x 1200.
- Colours:** Radio buttons for 16, 256, 65K (selected), and 16.7M.
- Refresh:** A dropdown menu showing '75 Hz'.
- Desktop Size:** A dropdown menu showing '1024 x 768'.
- Font Size:** Radio buttons for Auto (selected), Small, and Large.
- Options:** Checkboxes for 'VGA Feature Connector' and 'VMC Connector', both of which are unchecked.

At the bottom of the dialog are three buttons: 'OK', 'Cancel', and 'Help'.

## Options

Check the VGA Feature Connector option if you have a card connected to GrafixStar's feature connector.

Check the VMC Connector option if you have a VMC Controller daughter card fitted to your GrafixStar card, and you are using it to connect your GrafixStar card to other VMC-compatible multimedia cards. You will only see this option if you have a VMC Controller daughter card fitted to GrafixStar.

Both the feature connector and the VMC Connector reduce the number of available display modes. Do not select these options unless you have another card connected to either the feature connector or the VMC connector.

## Display Size

Use the display size option to define the number of pixels used to display the desktop on your monitor. The display size (sometimes called the display resolution) is expressed as the number of pixels in each horizontal line and the total number of lines. For example, a display size of 800 x 600 has 800 pixels per line and 600 lines.

**TIP** Larger display sizes are particularly useful when you use spreadsheet or word-processing applications, as they enable you to display a lot more information on the screen.

## Colors

Each pixel on the screen can be any one of a number of colors. The number of colors in the display mode indicates the number of colors available for each pixel. For example, if you are using a display mode with 16.7 million colors, each dot or pixel can be one of 16.7 million colors.

**TIP** In many cases there is a trade-off between the display size and the number of colors you can use - the larger the display size, the fewer colors are available. Decide which is more important for your application - having a high-resolution display or using the maximum number of colors.

## **Refresh**

The refresh rate is the number of times per second that the screen image is redrawn on your monitor (at 70 Hz the screen is redrawn 70 times per second).

**TIP** Choosing a high refresh rate for your monitor makes the screen image sharper and reduces flicker. As a general rule it's best to choose the highest refresh rate available for the display size and number of colors you are using.



## Font Size

The font size determines the size of the text characters that appear on the screen.

**TIP** If you choose Auto Font Size, the GrafixStar software automatically senses the best font size for your particular screen resolution. You can change the settings if you like, but you will probably find it difficult to read small fonts at high resolutions on a small monitor. Use large fonts at resolutions of 1024 x 768 or more if you are using a monitor with a 14 inch (or less) screen.

## **Desktop Size**

The desktop size defines the size of the Windows desktop. This size is expressed as the number of pixels in each horizontal line, and the number of lines. For example, a desktop of 1152 x 864 has 1152 pixels per line and 864 lines.

You can use the Desktop Size option to choose a desktop that is larger than the display size (this is sometimes called a virtual desktop). As you move the mouse to the edge of the display the desktop scrolls automatically, showing those areas that extend beyond the display.

## **Control menu (Edit Mode)**

The Control menu contains the following commands:

- Move**        Allows you to use the keyboard to move the window to another position.
- Close**       Canceled any changes you have made to the dialog and takes you back to the Display window.

**OK (Edit Mode)**

Confirms your changes and takes you back to the Display window.

**Cancel (Edit Mode)**

Cancel any changes you have made in this dialog and takes you back to the Display window.

## **Help (Edit Mode)**

Runs this on-line Help. You can use the F1 key instead of this button.

## **Display Mode**

The display mode describes the way that information is displayed on your monitor. It is the combination of display size, number of colors, refresh rate, font size and desktop size.

## Control menu

The Control menu contains the following commands:

- Restore** Restores the window to its former size after you have reduced it to an icon.
- Move** Allows you to use the keyboard to move the window to another position.
- Minimize** Reduces the window to an icon.
- Close** Closes the window and quits the application
- Switch To** Opens the Task List. You can use this to switch between running applications.
- About** Displays more information about GrafixStar and the GrafixStar software.



## **Minimize button**

The Minimize button reduces the Display window to an icon. This button has the same effect as choosing the Minimize command from the Control menu.

## **Edit mode button**

Use the [Edit Mode](#) dialog to change the characteristics of the currently selected Preset Mode.

## **OK**

Accepts your changes and closes the Display window. Your settings become the new defaults.

**Cancel**

Cancels any changes you have made and reverts to the settings you selected the last time you ran GrafixStar Display. You cannot choose this option if you have just installed the GrafixStar software.

## **Help**

Runs this on-line Help. You can use the F1 key if you prefer.

